

150mm

Loft Roman Blind Assembly & Fitting Guide

Operating The Blind

Pull Up

To raise blind, pull cord in straight position.

Ensure all of the cords are pulled up together to avoid the blind being lower on one side than the other and the bottom bar falling out.

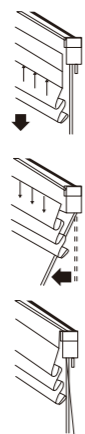
Pull down

To release, unwind cord from child safety device (cleat) and pull cord to the left.

Stop

To lock, pull cord to the right and tie back to the safety device (cleat) making sure that all of the cord is wound around the cleat.

It is recommended to wind the cord onto the cleat in a figure of eight.



Size	Kit Content	
90cm x 150cm	Fixing Bracket x 2 Wall Plugs x 6	Screws x 6 Safety Device (Cleat) x 1
120cm x 150cm	Fixing Bracket x 3 Wall Plugs x 8	Screws x 8 Safety Device (Cleat) x 1
150cm x 150cm	Fixing Bracket x 3 Wall Plugs x 8	Screws x 8 Safety Device (Cleat) x 1
180cm x 150cm	Fixing Bracket x 4 Wall Plugs x 10	Screws x 10 Safety Device (Cleat) x 1

Tools Required: PENCIL, RULER, DRILL

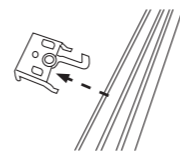
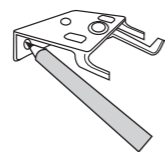
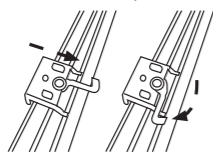
Take care when using the tools, wear gloves and eye protection.

WARNING
YOUNG CHILDREN CAN BE STRANGLING BY LOOPS IN PULL CORDS, CHAINS, TAPES AND INNER CORDS THAT OPERATE THE PRODUCT. TO AVOID STRANGULATION AND ENTANGLEMENT KEEP CORDS OUT OF THE REACH OF YOUNG CHILDREN. CORDS MAY BECOME WRAPPED AROUND A CHILD'S NECK. MOVE BEDS, COTS AND FURNITURE AWAY FROM WINDOW COVERING CORDS. DO NOT TIE CORDS TOGETHER. MAKE SURE CORDS DO NOT TWIST AND CREATE A LOOP.

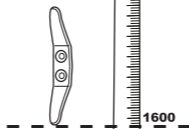
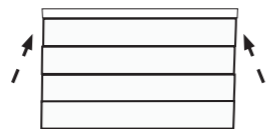
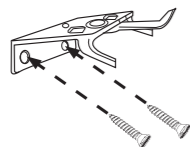


How To Install

- 1 Attach brackets to head box close to cord lock at one end and close to the tape drum at the other end and near centre for larger blinds where more than 2 brackets are provided.
- 2 Hold the blind up against the window and where the brackets meet the wall, using a pencil, mark the screw holes.
- 3 Remove the brackets from the blind.



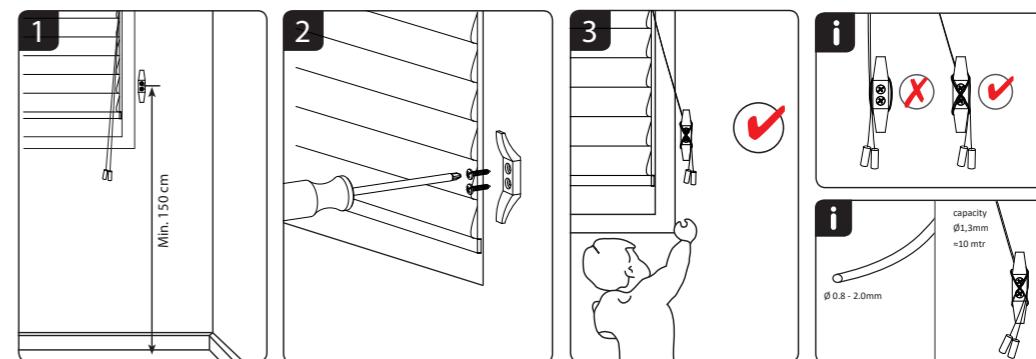
- 4 Pre drill screw holes and fix brackets with a screw driver. Do not over tighten screws until the brackets are level.
- 5 Now hang your roman blind on the brackets attached to the wall.
- 6 Attach the safety cord device to the window frame or wall. Ensure the cord is taut at all times to reduce the risk of strangulation on children.



160mm

FRONT

Installation Method For Safety Cord Device



Thank you for purchasing this product. Please read the instructions and warning carefully before use to ensure safe and satisfactory operation of this product. Keep these instructions for future reference.

NOTE

The safety clips or cleats must be positioned high enough to be out of reach of small children.

In all cases the distance from the floor to the bottom of the cord and cleats must be at least 1.5m.

The head rail shall not be installed less than 1.5m from the floor.

All safety clips for blinds need to be fixed to a solid surface using a screw and fixing suitable for the wall or surface material. These items should not be glued.

Small parts-choking hazard, keep out of reach of young children.

We do not recommend that roman blinds are cut down.



Keep away from small children. In order to avoid danger of suffocation, make sure that the safety device is installed properly.

The safety device is designed and tested to be used with cords.

WARNING: Choking hazard - small parts. Product may differ from the illustration.

Fitting The Child Safety Device (cleat)

The safety device (cleat) must be installed as close to the head rail as possible.

Children can strangle if this safety device is not installed. Always use this device to keep cords or chains out of reach of children.

Ensure all cords are fully wrapped around the safety device provided (cleat). Whenever the blind is not being operated.

There must not be any length of cord available for a small child to wrap around their neck.

BACK